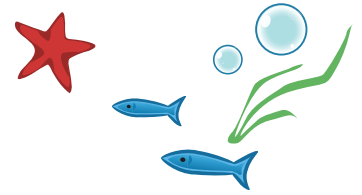


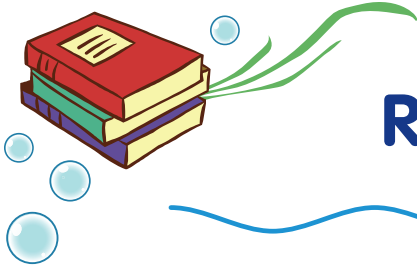
# Explore Kindness Research Sources



The following sources were used to develop Explore Kindness and can provide additional support:

- American School Counselor Association  
[www.schoolcounselor.org](http://www.schoolcounselor.org)
- Association for Supervision and Curriculum Development  
[www.acsd.org](http://www.acsd.org)
- Center for Study of Prevention and Violence, University of Colorado Boulder  
[www.cspv.colorado.edu](http://www.cspv.colorado.edu)
- Committee for Children  
[www.cfchildren.org](http://www.cfchildren.org)
- National Association of School Psychologists  
[www.nasponline.org](http://www.nasponline.org)
- National Diversity Council  
[www.nationaldiversitycouncil.org](http://www.nationaldiversitycouncil.org)
- PACER's National Bully Prevention Center  
[www.pacer.org/bullying](http://www.pacer.org/bullying)
- Teaching Tolerance  
[www.tolerance.org](http://www.tolerance.org)
- U. S. Centers for Disease Control  
[www.cdc.gov/healthyyouth](http://www.cdc.gov/healthyyouth); [www.cdc.gov/healthyschools/sec.htm](http://www.cdc.gov/healthyschools/sec.htm)
- U. S. Department of Education, PBIS (Positive Behavior Interventions and Supports)  
[www.pbis.org](http://www.pbis.org)
- U.S. Department of Health and Human Services  
[www.stopbullying.gov](http://www.stopbullying.gov)
- Yale Center for Emotional Intelligence  
[www.ycei.org](http://www.ycei.org)





# Research Sources

- Durlak, J. A., Domitrovich, C. E., Weissberg, R. P., & Gullotta, T. P. (Eds.) (2016) Handbook of social and emotional learning: Research and practice. New York, NY: The Guilford Press.
- Faris, R. and Felmlee, D. (2011), "Status Struggles: Network Centrality and Gender Segregation in Same- and Cross-Gender Aggression" American Sociological Review, Vol. 76.
- Ginsberg, M. B. (2015). Excited to learn: Motivation and culturally responsive teaching. Thousand Oaks, CA: Corwin Press.
- Humphrey, N. (2013). Social and emotional learning: A critical appraisal. Washington, DC: Sage.
- Jagers, R. J. (2016). Framing social and emotional learning among African American youth: Toward an integrity-based approach. Human Development, 59, 1-3.
- Mason, C, Rivers Murphy M, & Jackson Y. (2020) Mindful School Communities: The Five Cs of Nurturing Heart Centered Learning (A heart-centered approach to meeting students social-emotional needs and fostering academic success). Bloomington, IN: Solution Tree Press.
- McKibben, S. (2017) Raising Upstanders. ASCD Express, Vol. 59, No. 4.
- McKown, C. (2018). 6 Steps to Effective SEL Assessment. ASCD Express, Vol. 14, No. 4.
- Mussey, S. (2019) Mindfulness in the Classroom: Mindful Principles for Social and Emotional Learning. Waco, TX: Prufrock Press.
- Siegel, D. & Payne, T. (2015) The Whole-Brain Child Workbook: Practical Exercises, Worksheets and Activities to Nurture Developing Minds. Eau Claire, WI: PESI Publishing & Media.

